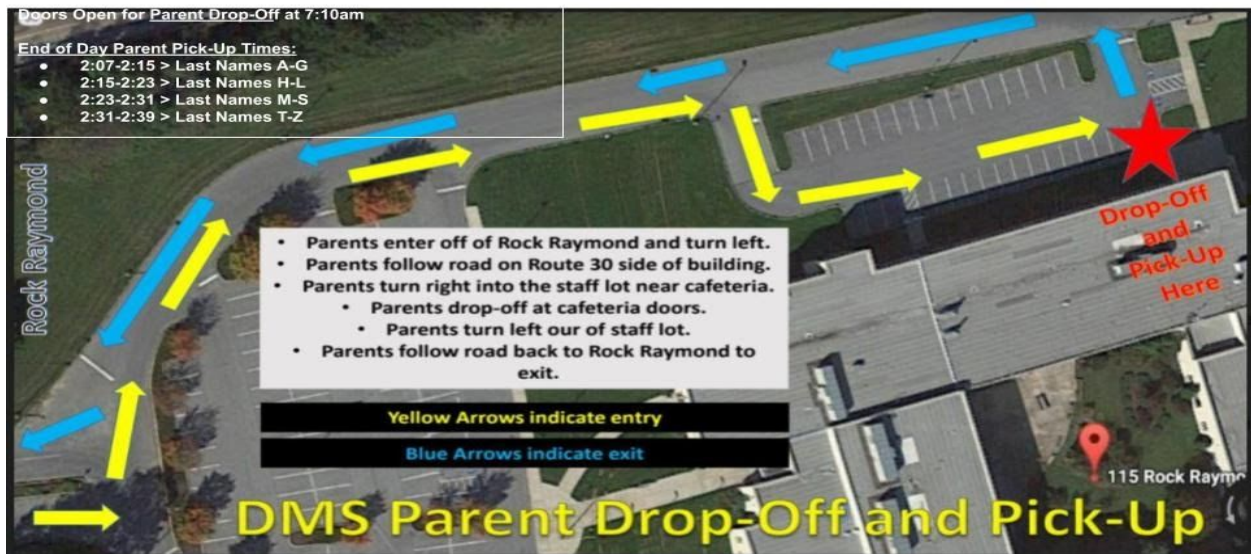


## **DMS SPRING RE-ENTRY CRITICAL INFORMATION FOR STUDENTS AND PARENTS**

- Make sure your child knows who their **homeroom teacher is and the room number**.
  - That information can be found in both the Student and Parent Infinite Campus Portal on their schedules.
  - We will have teachers, counselors, and staff helping students navigate the building throughout the coming weeks. We promise everyone will find where they are going and we are here to help make that happen!
- **AM Parent Drop-Off**
  - If you are driving your student to school in the mornings, you will follow the procedure outlined via the “AM Drop-Off” Map.
    - Once you turn into DMS from Rock Raymond Road, you will turn left, follow the road along the Route 30 side of the building.
    - Then turn right into the Cafeteria side parking lot.
    - Please wait until you reach the front of the line and then have your child exit the vehicle.
    - Then turn left to exit the cafeteria lot and then exit the premises.
  - **DMS will open at 7:10am for Parent-Drop off.**
    - **Please do not drop your student off in the cafeteria lot prior to 7:10am as there will be no supervision or entry to the building.**
  - From November until now, we had between 250-350 parents dropping their students off and picking them up. We anticipate 400-550 am drop-offs beginning Monday. To that end, we ask that your child is ready to exit the vehicle as soon as you pull up to the front of the line, and then you immediately exit the lot so the next car can pull up.
  - **Students will enter the building and report directly to their Homeroom.**
  - **Please watch this video to see the Drop-Off Process:**  
<https://youtu.be/KZuJeC0nzqk>



- **PM Parent Pick-Up**

- If you are picking up your student in the afternoon after school, you will follow the same procedure outlined via the “AM Drop-Off” Map.
- However, there will be cones forming one lane into the cafeteria lot with room for an egress to the left. DMS Staff will be directing traffic and assisting students to find their parent’s vehicles.
- During the staggered school phase from November until now, we initially had an extremely long line of vehicles. This line wraps from the cafeteria lot, winds zig-zag through the upper lot parking lanes, and beyond. This already long line will **double in size** if everyone does not follow the new pick-up times.
  - Do not arrive early as this will definitely cause major back-ups.
  - *We absolutely have no room for parents//guardians to circumvent the lot by parking in the main entrance area or along the curbs to meet their students.*
    - **Wave 1 = 2:07pm-2:15pm**
      - Last Names **A-G**
    - **Wave 2 = 2:15pm-2:23pm**
      - Last Names **H-L**
    - **Wave 3 = 2:23pm-2:31pm**
      - Last Names **M-S**
    - **Wave 4= 2:31pm-2:39pm**
      - Last Names **T-Z**

- **Parent Drop-Off after 7:40am and Early Dismissals**

- Students arriving to school after 7:40am must sign-in late at the Main Office.
- Please email [DM\\_attendance@dasd.org](mailto:DM_attendance@dasd.org) to notify us of any early dismissal. We request electronic communication during the pandemic.
  - Early dismissal students exit through the Main Office Entrance.

- **Bell Schedule**

### 2020-2021 Bell Schedule



7:10 - 7:40 *Parent Drop-Off*  
 7:40 - 7:50 *Homeroom*  
 7:50 - 8:39 *Period 1*  
 8:39 - 9:28 *Period 2*  
 9:28 - 10:17 *Period 3*  
 10:17 - 11:06 *Period 4*



Lunch 1	
11:06 - 11:36	<b>Period 5 (L)</b>
11:36 - 12:25	<i>Period 6/7</i>
12:25 - 1:14	<i>Period 8/9</i>

Lunch 2	
11:06 - 11:55	<i>Period 5/6</i>
11:55 - 12:25	<b>Period 7 (L)</b>
12:25 - 1:14	<i>Period 8/9</i>

Lunch 3	
11:06 - 11:55	<i>Period 5/6</i>
11:55 - 12:44	<i>Period 7/8</i>
12:44 - 1:14	<b>Period 9 (L)</b>

1:14 -2:03 *Period 10*  
 2:03 -2:40 *REACH + Organize*  
 2:07 -2:15 *Wave 1-Parent Pick-Up: Last Name A-G*  
 2:15 -2:23 *Wave 2-Parent Pick-Up: Last Name H-L*  
 2:23 -2:31 *Wave 3-Parent Pick-Up: Last Name M-S*  
 2:31 -2:39 *Wave 4-Parent Pick-Up: Last Name T-Z*  
 2:37 *Bus-HS Wave (Gold)*  
 2:39 *Bus-DMS Wave (Blue)*

- **Essential Items for In-Person Days**

- Students should bring the following with them every day they attend in-person:
  - Face Mask that Fits District Guidelines
    - *All individuals (students, staff, visitors) in DASD are required to wear a mask in school. The mask shall cover the mouth and nose and be secured to the head with ties, straps, or loops over ears and must contain two or more layers of fabric. Gators or gator type masks are not permitted. Masks will be provided for any students that do not have one.*
      - *If you have any specific questions about types of masks, shields or medical exceptions, please direct them to the building principal at [nindeglio@dasd.org](mailto:nindeglio@dasd.org)*
  - iPad (housed within the protective district iPad case)
    - Be sure to charge iPad the night before school
  - Earbuds or headphones for use with their iPad
  - Lunch (unless student is getting lunch at school, which is free)
  - *Recommended - portable external battery and cord for quick ipad charge if needed*
  - *Recommended = water bottle (water fountains are closed except for two touchless water bottle filling stations)*
- **Students will not be using lockers this year** so they'll be carrying what they bring with them each day (therefore avoid bringing unnecessary items).
  - Students will not be changing clothes for Physical Education and they will not be using the locker rooms.

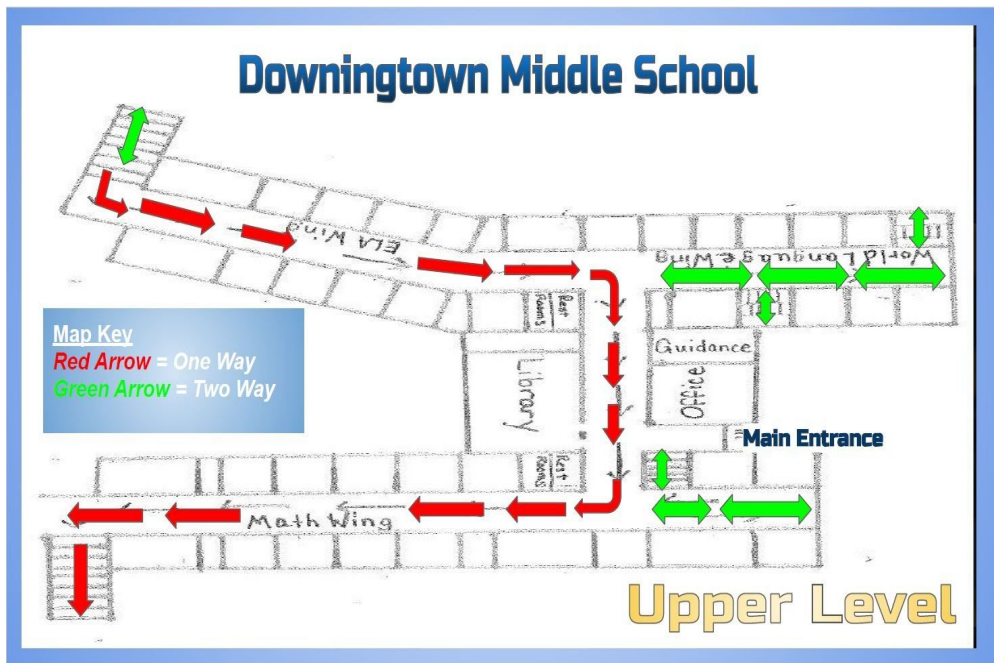
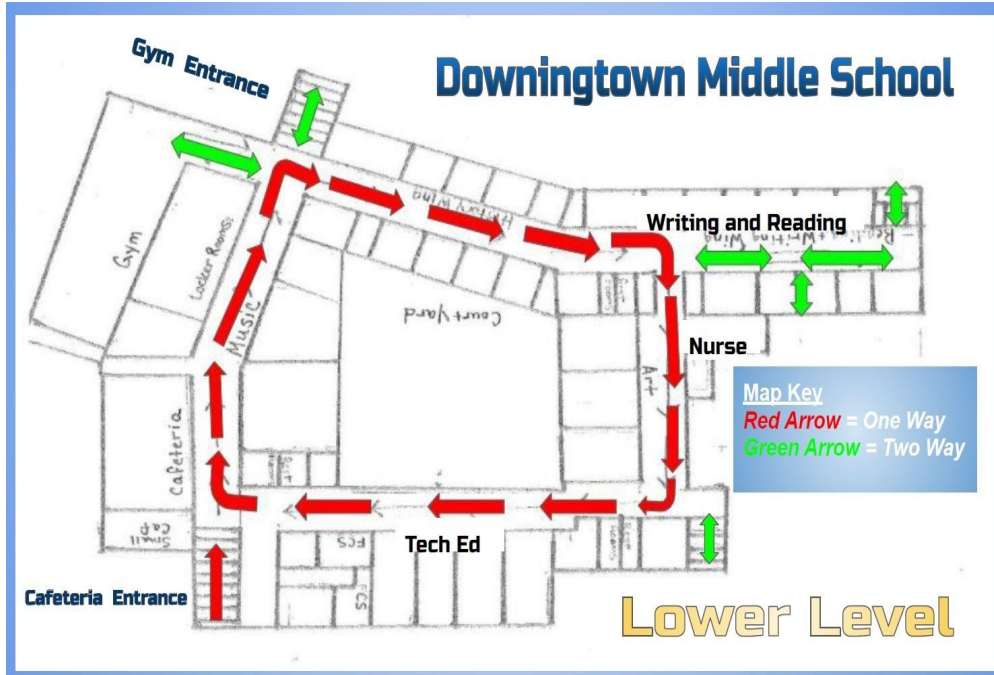
- **Lunches**

- Students have been assigned seats during their lunch time in one of four locations to allow for no less than 3 feet of spacing, facing the same direction where possible, and the use of Tri-Fold Shields where possible.
  - Lunch seats will be posted on Schoology.
- These locations are the Cafeteria, Auxiliary Gymnasium, Room B103, and Room B106.
- Students may remove their masks while eating lunch.

- **Hallway Directions**

- In order to maximize safety and physical distancing, DMS is utilizing a “directional approach” to movement through the hallways. Please look over the map below. Staff will be working with students upon their return to learn the hallway traffic flow procedures.
- Large, clearly marked directional arrows are located on the floors throughout the building.
- **Class Dismissal**
  - Two minutes prior to the end of each class, students with last name A-L will be dismissed to walk to their next class.

- When arriving at their next class, students will line up along the lockers at 3 feet spacing.
- One minute prior to the end of each class, students with last names M-Z will be dismissed to walk to their next class.
  - Once they've left the classroom, the first group of waiting students will enter the classroom.



- **Symptom Checking Before Coming to School**

Individuals are considered COVID-19 symptomatic if he/she has:

- At least one (1) symptom from Group A
- OR**
- Two (2) or more symptoms from Group B

Group A 1 or more symptoms	Group B 2 or more symptoms
Lack of smell or taste (without congestion)	Fever (Oral>100.4, axillary/temporal>99.5)
Cough	Sore throat
Shortness of breath	Chills
Difficulty breathing	Muscle pain
	Fatigue
	Headache
	Congestion or runny nose
	Nausea or vomiting
	Diarrhea

For a current list of symptoms see CDC's website: <https://www.cdc.gov/coronavirus/2019-ncov/symptoms-testing/symptoms.html>.  
 Individuals with a known chronic condition that presents symptoms like those in either Group A or B may be exempt for those symptoms with documentation from a physician.

- **If Your Student Presents with Symptoms While in School...**

- Student will be sent to the nurse.
- Nurse will assess.
- Student will be placed in the confined "Isolation Room."
- Parent/Guardian will be contacted to pick the student up.
- Student will exit the building through a special isolated entrance/exit.

- **Spacing within Classrooms**

- Desks and seats have been spaced with no less than 3 feet distancing.
- Hand Sanitizer is available in every classroom.
- At the end of each class period, we will kindly ask each student to assist in wiping down their individual desk (paper towels provided and the teacher will be spraying the desktop with the normal district approved cleaner).
  - This is voluntary; students may decline to assist.

- **Mask Breaks**

- Due to the complicated nature of the middle school bell schedule, there will be no formal mask breaks built into the schedule aside from lunch.
- Teachers have the discretion to take students outside for a mask break.

- **"Protect This House"**

- When we all enter the doors of DMS, we are a family. We are one. It is our responsibility to take care of one another and take care of ourselves. By wearing our masks properly, we take care of our entire Lancer community and beyond.
  - Wear your appropriately fitting mask over your nose and mouth at all times.
  - If you see a friend not wearing their mask properly, remind them to fix it.
  - Refusal to follow the mask mandate will result in removal from school.
- We will ***"Protect This House!"***

[https://www.youtube.com/watch?v=WB06g-C1nPw&ab\\_channel=UnderArmour](https://www.youtube.com/watch?v=WB06g-C1nPw&ab_channel=UnderArmour)